

Franquette Walnut

Juglans regia sp.

Medium to large, elongated. Pointed and fairly smooth, light, clean, attractive, thin shell. A leading California variety.

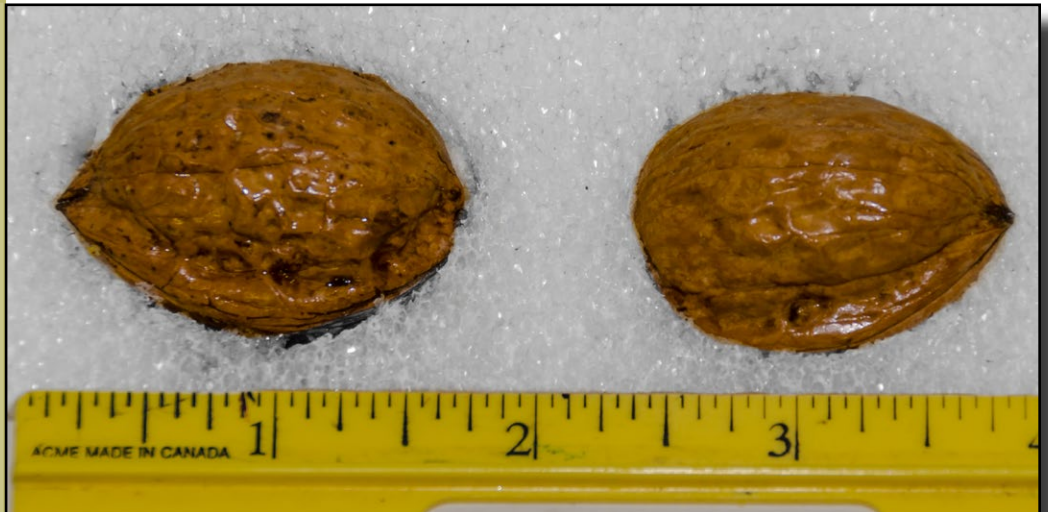
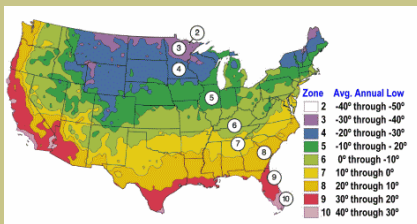
Self fertile but will produce heavier crop if used with pollinizer.

Requires approximately 1000-1200 hours chilling under 45° F.

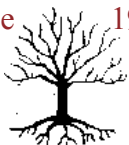
Ripens: late October

Mature height is 40 ft. with a spread of 35-40 ft.

Cold hardy to U.S.D.A. Zone 8. Last English Walnut to bloom and leaf, making it less susceptible to frost damage.



Since 1944



From the nurseries of

L.E. COOKE CO

Excellence
in Bareroot