

# Cooke's Giant Sweet™ Walnut

*Juglans regia sp.*

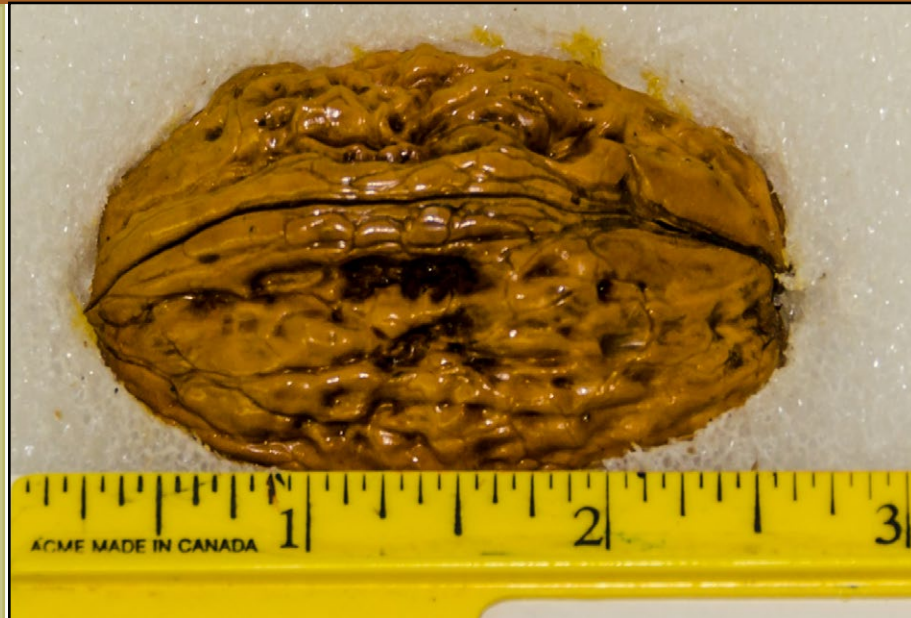
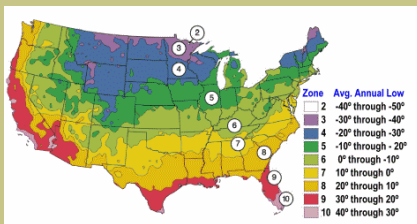
Very large, elongated. Medium thick, rough texture shell. Fine, sweet flesh. Good nut for backyard use. Prolific growth, large leaves. A very interesting conversation piece because of its size and appearance.

Self fertile but will produce heavier crop if used with pollinizer.

Requires approximately 1000 hours chilling under 45° F.

Mature height is 40 ft. with a spread of 35-40 ft.

Ripens: Late September. Cold hardy to USDA Zone 6b. Does well in Oregon and Washington.



Since 1944



From the nurseries of

## L.E. COOKE CO

Excellence  
in Bareroot